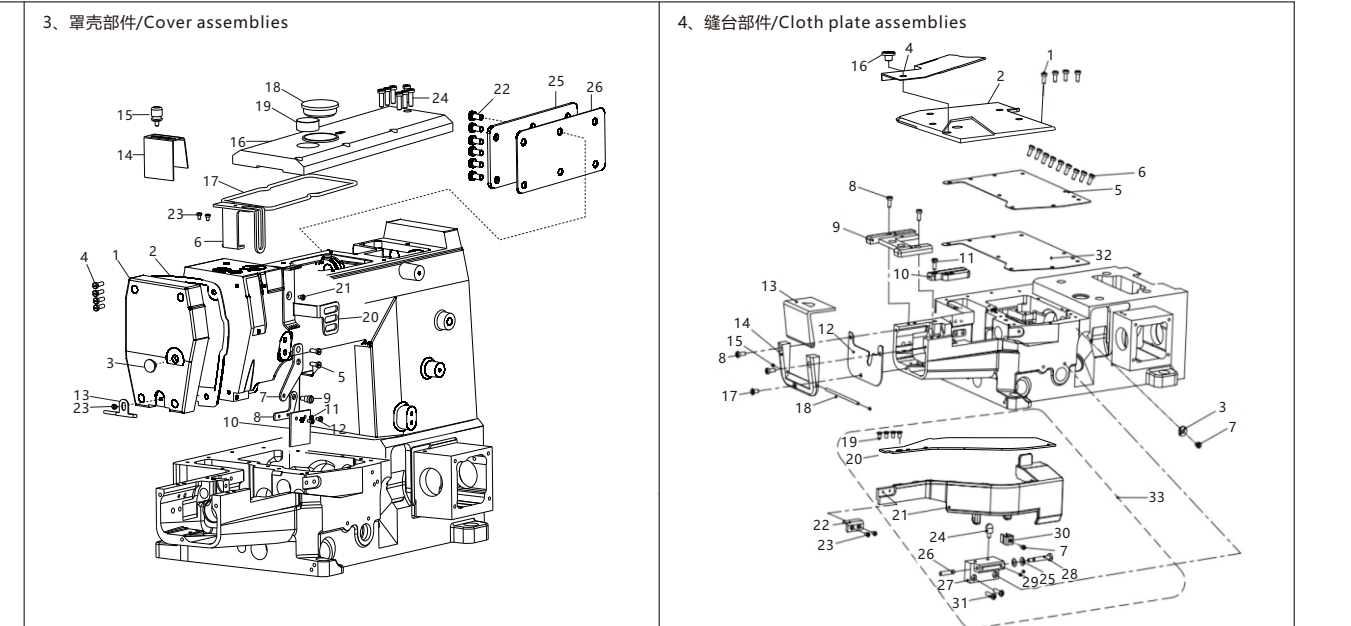
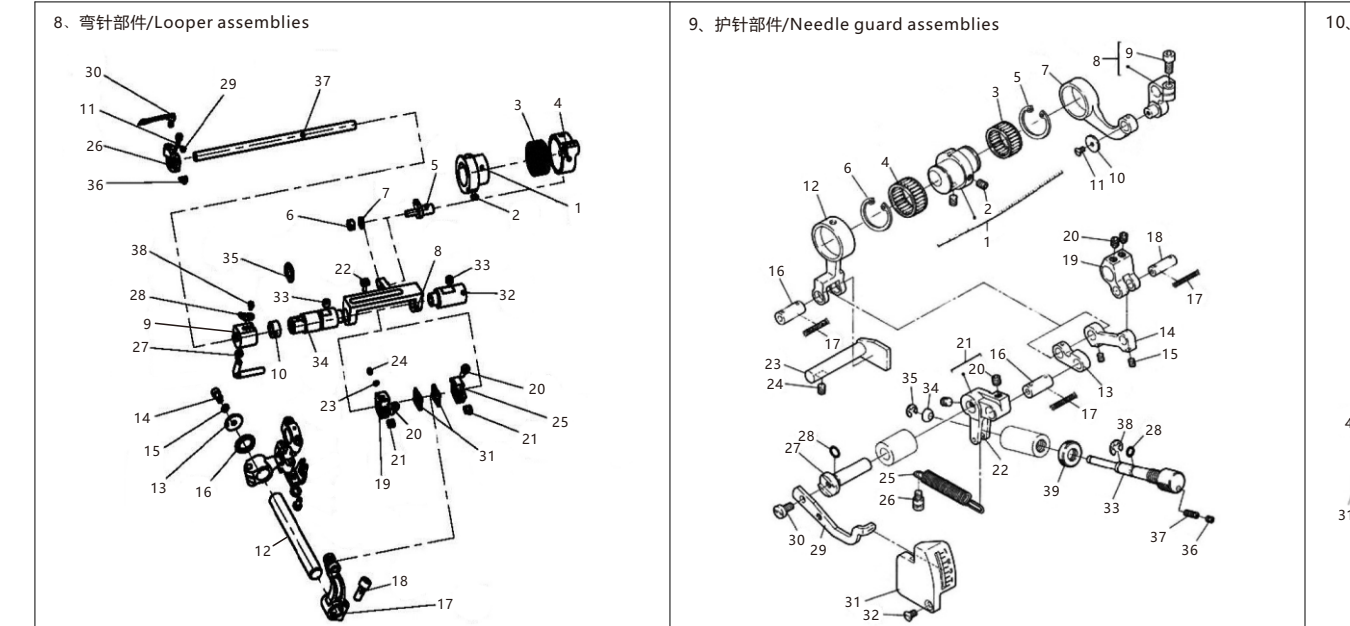


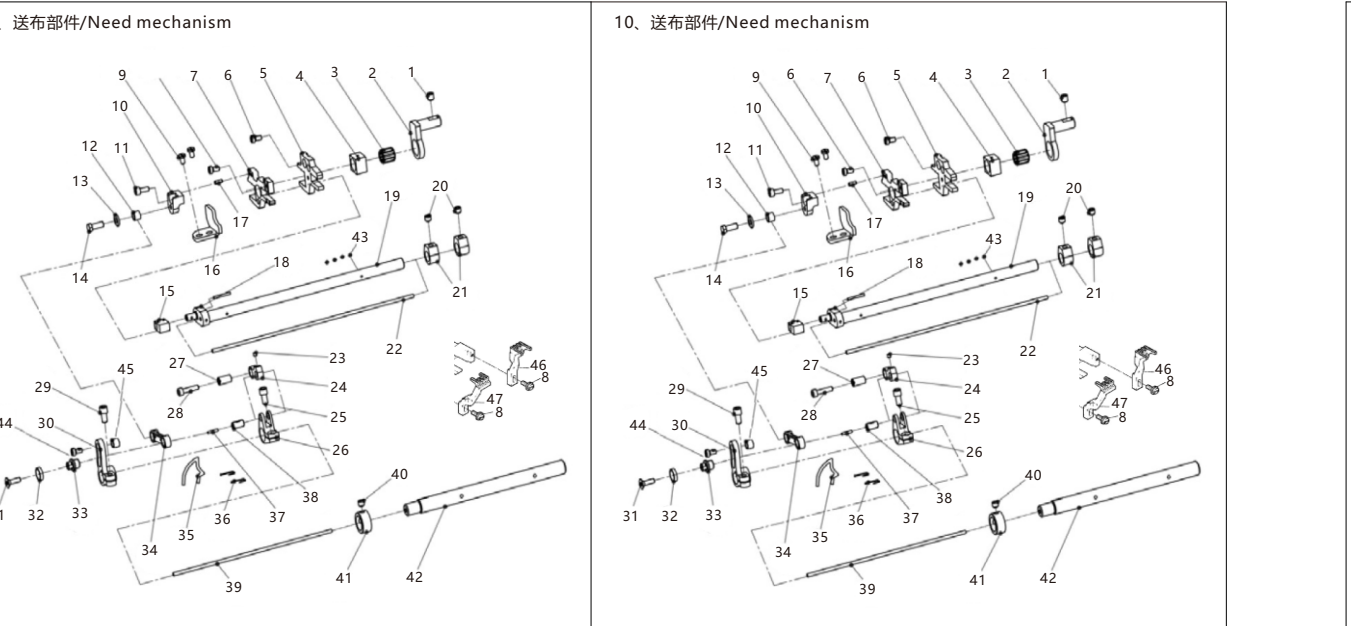
序号	物料号	名称	Description	数量	备注
Ref.No.	Part.No.	Part.No.	Description	Qty	Remark
1	13.002.00003	主轴套套筒	sleeve	1	
2	13.000.00002	滚针轴套套筒	sleeve	2	
3	13.000.00003	滚针套筒	sleeve	2	
4	13.000.00001	滚针套筒	sleeve	1	
5	13.000.00005	滚针套筒	sleeve	1	
6	13.002.00002	滚针套筒	sleeve	1	
7	13.002.00002	滚针套筒	sleeve	1	
8	13.002.00009	滚针套筒	sleeve	1	
9	13.000.00009	滚针套筒	sleeve	1	
10	13.000.00002	滚针套筒	sleeve	3	
11	13.002.00004	滚针套筒	bushing	1	
12	13.002.00006	滚针套筒	bushing	2	
13	13.002.00029	滚针套筒	bushing	1	
14	13.002.00027	滚针套筒	bushing	1	
15	13.002.00008	滚针套筒	bushing	1	
16	13.002.00008	滚针套筒	bushing	1	
17	13.002.00010	滚针套筒	bushing	1	



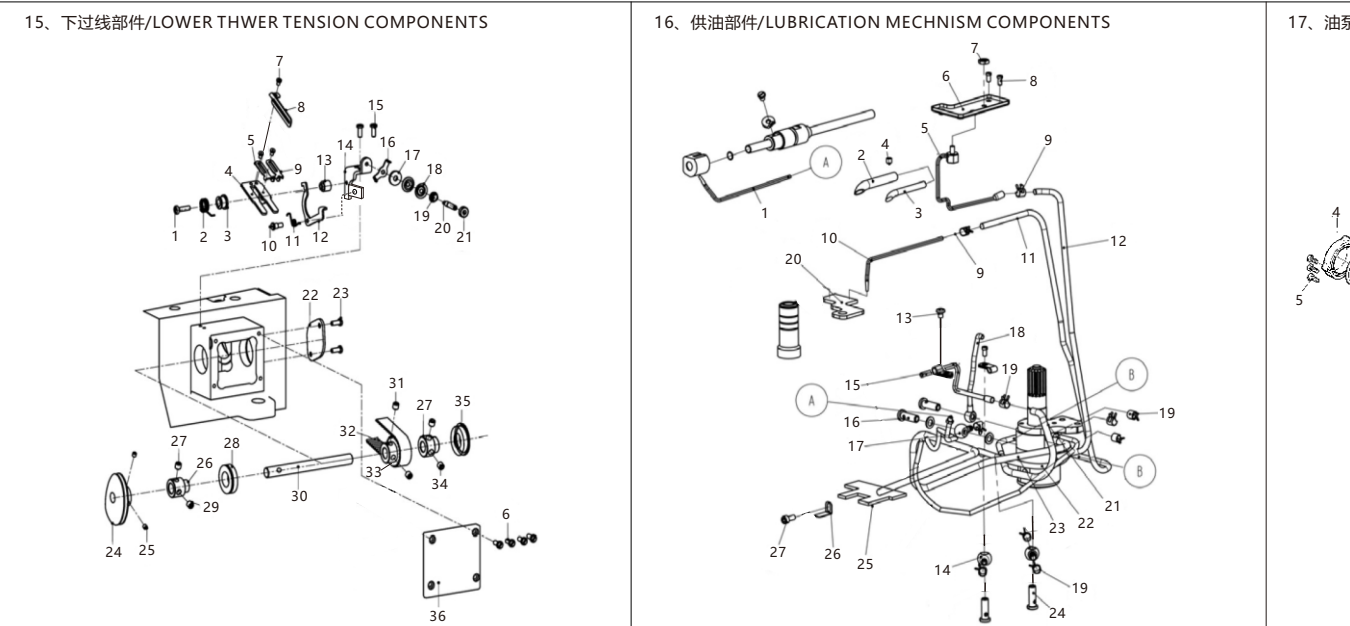
序号	物料号	名称	Description	数量	备注
Ref.No.	Part.No.	Part.No.	Description	Qty	Remark
1	19.01.03.00020	机壳	ARM	1	
2	19.01.03.00021	机壳底座	Machine seat	1	
3	17.01.00277	滚针轴套	Machine mounting screw MB	4	
4	13.000.00005	滚针套筒	plug	3	
5	13.000.00015	滚针套筒	plug	4	
6	17.01.00091	滚针套筒	Screw	4	
7	13.000.00016	滚针套筒	Roller	6	
8	13.000.00016	滚针套筒	Roller	2	
9	13.000.00016	滚针套筒	Roller	2	
10	13.000.00016	滚针套筒	Roller	3	
11	13.000.00021	滚针套筒	Roller	1	
12	13.000.00022	滚针套筒	Roller	2	
13	13.000.00013	滚针套筒	Roller	1	
14	17.01.00036	滚针套筒	Screw	2	
15	13.000.00016	滚针套筒	plug	1	
16	20.02.03.00093	滚针套筒	Screw	1	
17	13.000.00006	滚针套筒	Upper cover gasket	1	
18	13.000.00046	滚针套筒	Upper cover plug	1	
19	13.000.00044	滚针套筒	Sight Window	4	
20	17.01.00043	滚针套筒	Screw	1	
21	17.01.00027	滚针套筒	Screw	1	
22	17.01.00025	滚针套筒	Screw	6	
23	17.01.00036	滚针套筒	Screw	2	
24	17.01.00023	滚针套筒	Screw	7	
25	13.002.00016	滚针套筒	Roller	6	
26	13.006.00008	滚针套筒	Rear cover pad	1	
27	20.02.03.00057-1	滚针套筒	Clamping pin	1	
28	20.02.03.00057-10	滚针套筒	Roller	1	
29	20.02.03.00057-8	滚针套筒	Screw	2	
30	13.002.00017	滚针套筒	Clamp	1	
31	17.01.00023	滚针套筒	Pin	1	
32	13.002.00023	滚针套筒	Flat mat	1	
33	20.02.03.00057	滚针套筒	bed cover	1	



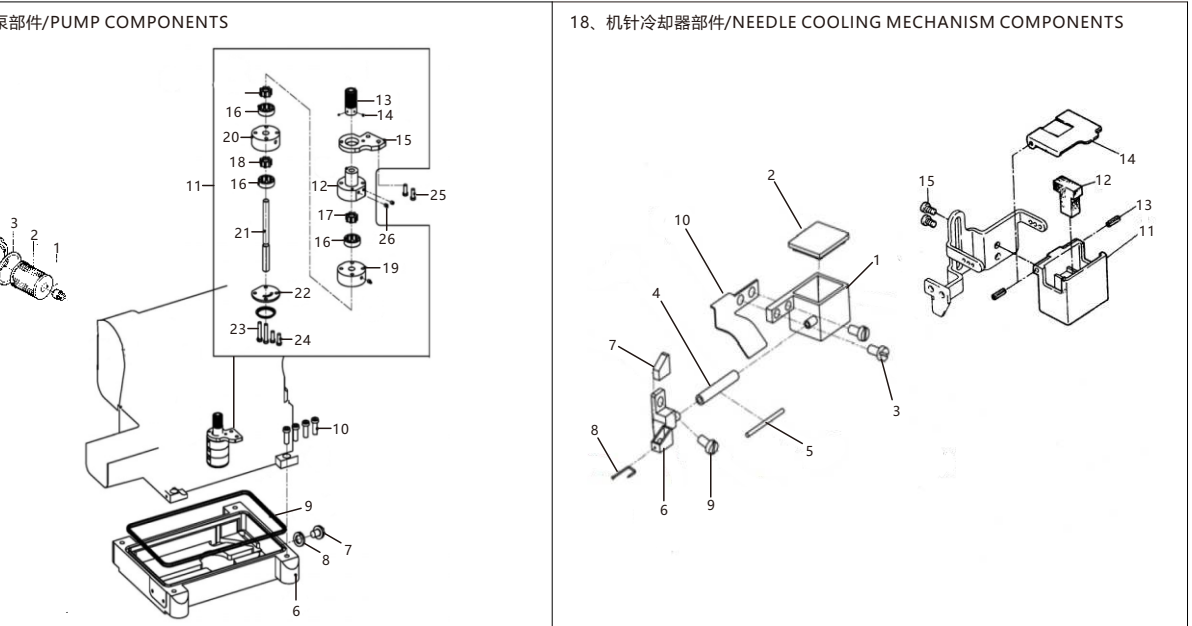
序号	物料号	名称	Description	数量	备注
Ref.No.	Part.No.	Part.No.	Description	Qty	Remark
1	20.02.03.00092	罩壳	Face cover	1	
2	20.02.03.00096	罩壳	Face cover gasket	1	
3	13.000.00032	罩壳	plug	1	
4	13.000.00032	罩壳	plug	1	
5	13.000.00015	罩壳	plug	4	
6	17.01.00100	罩壳	Screw	6	
7	17.01.00068	罩壳	nut	2	
8	17.01.00090	罩壳	nut	4	
9	13.002.00025	罩壳	Needle plate	1	
10	13.000.00019	罩壳	plate	1	
11	17.01.00044	罩壳	Screw	1	
12	13.002.00020	罩壳	needle tone after beads	1	
13	13.000.00037	罩壳	cover plate assembly	1	
14	13.006.00016	罩壳	left cover plate rack	1	
15	17.01.00042	罩壳	Screw	1	
16	17.05.00061	罩壳	washer	1	
17	17.01.00043	罩壳	Screw	1	
18	13.002.00022	罩壳	pin	1	
19	13.002.00052	罩壳	needle tone	4	
20	17.01.00043	罩壳	Screw	2	
21	13.002.00056	罩壳	washer	2	
22	20.02.03.00057-2	罩壳	bracket	1	
23	20.02.03.00057-3	罩壳	holder	1	
24	20.02.03.00057-4	罩壳	screw	1	
25	20.02.03.00057-5	罩壳	bracket assembly	2	
26	20.02.03.00057-6	罩壳	pin	1	
27	20.02.03.00057-7	罩壳	Clamping pin	1	
28	20.02.03.00057-10	罩壳	Roller	1	
29	20.02.03.00057-8	罩壳	Screw	2	
30	13.002.00017	罩壳	Clamp	1	
31	17.01.00023	罩壳	Pin	1	
32	13.002.00023	罩壳	Flat mat	1	
33	20.02.03.00057	罩壳	bed cover	1	



序号	物料号	名称	Description	数量	备注
Ref.No.	Part.No.	Part.No.	Description	Qty	Remark
1	13.002.00067-1	缝台	eccentric	1	
2	13.002.00102-1	缝台	eccentric	2	
3	13.002.00102-2	缝台	eccentric	1	
4	13.002.00067-2	缝台	eccentric	1	
5	13.002.00067-3	缝台	eccentric	1	
6	17.04.00010	缝台	nut	1	
7	13.002.00102-6	缝台	eccentric	1	
8	13.002.00050	缝台	eccentric	1	
9	17.01.00141	缝台	nut	1	
10	13.000.00001	缝台	eccentric	1	
11	17.01.00044	缝台	Screw	1	
12	13.002.00048	缝台	eccentric	1	
13	13.002.00102-8	缝台	eccentric	1	
14	17.01.00011	缝台	nut	1	
15	13.002.00102-10	缝台	eccentric	2	
16	17.05.00061	缝台	washer	1	
17	13.002.00066	缝台	eccentric	1	
18	13.002.00022	缝台	eccentric	1	
19	13.002.00056	缝台	eccentric	1	
20	17.01.00043	缝台	Screw	2	
21	13.002.00056	缝台	eccentric	1	
22	13.002.00051	缝台	eccentric	1	
23	13.002.00056	缝台	eccentric	1	
24	17.01.00120	缝台	Screw	1	
25	13.002.00054	缝台	eccentric	1	
26	17.01.00010	缝台	Screw	1	
27	13.002.00076	缝台	eccentric	1	
28	13.002.00110	缝台	eccentric	1	
29	13.002.00078	缝台	eccentric	1	
30	13.002.00063	缝台	eccentric	1	
31	13.002.00079	缝台	eccentric	1	
32	13.002.00059	缝台	eccentric	1	
33	13.002.00073	缝台	eccentric	1	
34	13.002.00057	缝台	eccentric	1	
35	17.05.00015	缝台	eccentric	1	
36	13.002.00062	缝台	eccentric	1	
37	17.01.00010	缝台	Screw	1	
38	17.01.00017	缝台	Screw	1	
39	13.002.00074	缝台	eccentric	1	



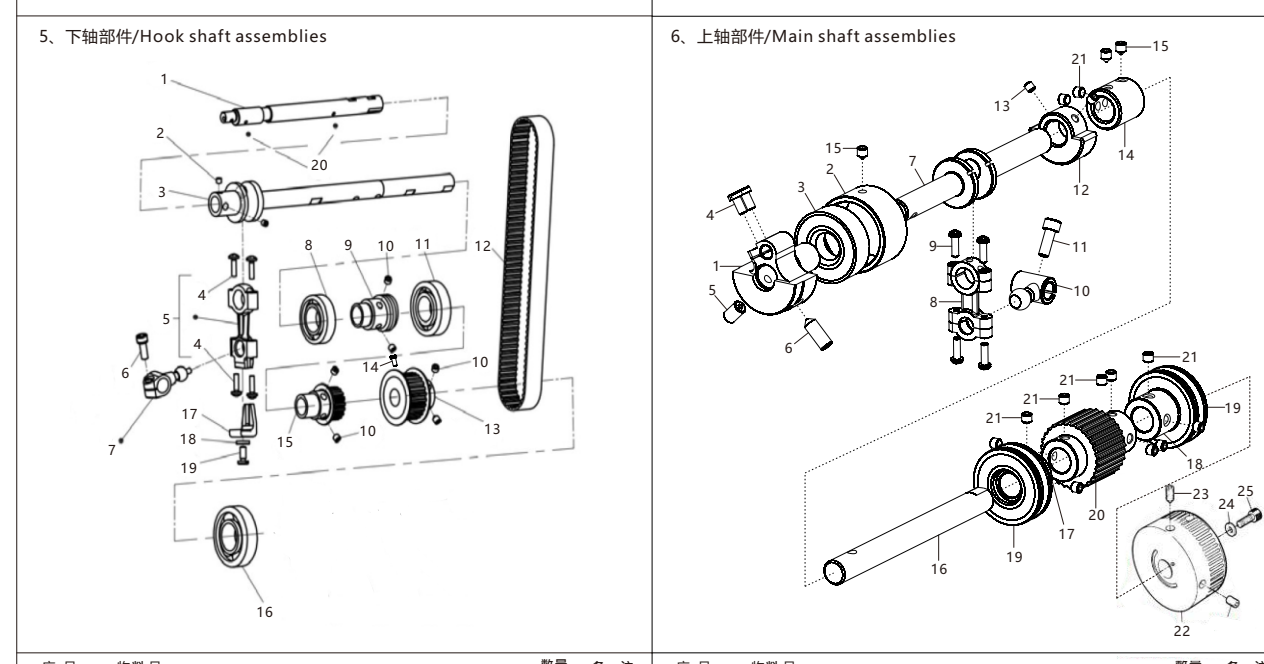
序号	物料号	名称	Description	数量	备注
Ref.No.	Part.No.	Part.No.	Description	Qty	Remark
1	17.01.00023	螺钉	Screw	1	
2	13.000.00012	油嘴	Oil Wick	1	
3	13.000.00013	油嘴	Oil Wick	1	
4	13.002.00113	打线钩	Right line retaining ring	1	
5	13.000.00015	壳盖片	Bracket	1	
6	17.01.00028	螺钉	Screw	4	
7	17.04.00016	螺母	Nut	1	
8	13.002.00114	打线钩	Thread guide (left)	3	
9	13.002.00116	打线钩	Thread guide (right)	1	
10	17.01.00063	螺钉	Screw	1	
11	13.002.00119	差动杆	Differential feed dog	1	
12	16.05.00014	灯	Light-line wench	1	
13	13.002.00117	打线钩	Thread guide	1	
14	13.002.00111	打线钩	Thread guide (left)	1	
15	17.01.00016	螺钉	Screw	2	
16	13.002.00146	二根过线	slender	1	
17	13.000.00108	差动杆	pin	1	
18	13.002.00122	差动杆	spring	2	
19	13.000.00203	卡簧	spring	1	
20	13.000.00049-2	差动杆	Wood felt	2	
21	13.002.00121	差动杆	collar	2	
22	13.002.00128	打线钩	adjusting nut	1	
23	17.01.00010	螺钉	Screw	1	
24	13.002.00131	凸轮	CAM ASAM	1	
25	17.01.00010	螺钉	Screw	2	
26	13.002.00125	打线钩	collar	2	
27	17.01.00010	螺钉	Screw	1	
28	17.01.00010	螺钉	Screw	1	
29	17.01.00010	螺钉	Screw	1	
30	13.002.00006	打线钩	Shaft	1	
31	17.01.00018	打线钩	Screw	2	
32	13.002.00089	打线钩	link	1	
33	13.002.00089	打线钩	Screw	1	
34	17.03.00011	打线钩	link	1	
35	17.06.00019	打线钩	collar	1	
36	20.02.03.00003	打线钩	cover	1	



序号	物料号	名称	Description	数量	备注
Ref.No.	Part.No.	Part.No.	Description	Qty	Remark
1	16.05.00014	油嘴	Fuel	1	
2	13.000.00012	油嘴	Oil Wick	1	
3	13.000.00013	油嘴	Oil Wick	1	
4	17.02.00012	螺钉	Screw	1	
5	13.000.00015	壳盖片	Oil tube complete	1	
6	13.000.00020	油嘴	Upper oil tube	3	
7	17.04.00016	螺母	Nut	1	
8	13.002.00114	打线钩	Thread guide	3	
9	13.002.00116	打线钩	Thread guide (right)	1	
10	13.000.00049-1	差动杆	Oil tube	4	
11	13.002.00119	差动杆	Pump complete	1	
12	16.05.00014	灯	Light-line wench	1	
13	13.002.00117	打线钩	Small gear wheel	1	
14	13.000.00210	差动杆	Terminal	2	
15	13.002.00136	差动杆	oil tube pipe	1	
16	13.002.00130-3	差动杆	Terminal(single hole)	2	
17	13.000.00204	差动杆	pipe	1	
18	13.002.00130-4	差动杆	Clamp	8	
19	13.002.00130-7	差动杆	Wood felt	2	
20	13.000.00049-2	差动杆	Wood felt	2	
21	16.05.00014	油嘴	Oil tube	1	
22	16.05.00014	油嘴	Oil tube	1	
23	13.002.00130-11	差动杆	Clamp	1	
24	13.002.00130-12	差动杆	Screw	2	
25	17.01.00011	螺钉	Screw	2	
26	13.002.00130-13	差动杆	Screw	2	
27	17.01.00036	螺钉	Screw	1	



序号	物料号	名称	Description	数量	备注
Ref.No.	Part.No.	Part.No.	Description	Qty	Remark
1	13.000.00024	滚针套筒	Silicone oil reservoir	1	
2	13.000.00025	滚针套筒	Silicone oil reservoir cover	1	
3	17.01.00090	螺钉	Oil tube	2	
4	16.05.00014	油嘴	Oil Wick	1	
5	16.05.00013	油嘴	Oil Wick	1	
6	13.002.00142	滚针套筒	Silicone oil reservoir body	1	
7	13.002.00143	滚针套筒	Silicone oil reservoir	1	
8	16.05.00021	大针杆	Pin	1	
9	17.01.00022	螺钉	Fixed plate	1	
10	10.02.00023	过线板 (4-4)	Needle bar	1	
11	13.000.00226	上轴套筒	Silicone oil case(upper)	1	
12	13.000.00227	上轴套筒	Silicone oil case(lower)	1	
13	13.000.00229	弹性密封	Elastic pin	2	
14	13.000.00228	上轴套筒	Silicone oil case(upper)	1	
15	17.01.00146	木螺钉	Screw	2	



序号	物料号	名称	Description	数量	备注
Ref.No.	Part				